



Glass Blender

with Glass Miller

EBL 3415W

Instruction Manual

Thank you for purchasing EuropAce Glass Blender.
For safety purpose, please read this operating instruction manual carefully before using
and keep it for future reference.

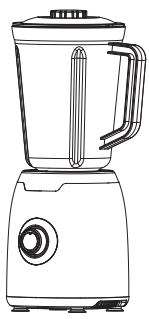
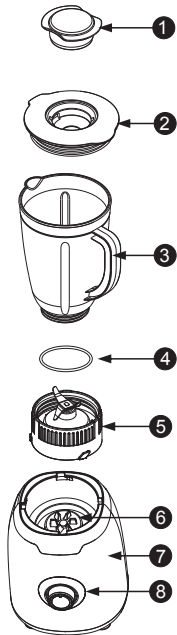


RELISHING YOUR COOKERY

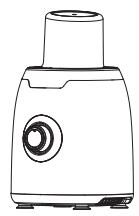
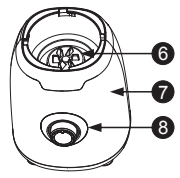
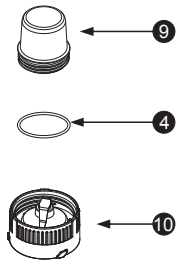
Celebrate Fine Living!



KEY PARTS NAME AND LOCATION



Mixer



Grinder

- | | | |
|--------------------|------------------------|-------------------------|
| 1、Top cover | 5、Stirring knife stand | 9、Grinding cup |
| 2、Stirring cup lid | 6、Rotatable base | 10、Grinding knife stand |
| 3、Stirring cup | 7、Main machine | |
| 4、Sealing ring | 8、Position switch | |

FEATURES

- 1.The machine has many functions , stirring, grinding, etc. Creative life, your selection
- 2.Simple and refined design, beautiful, integrated structure, easy operation and clean
- 3.High rotating speed electrical machinery with overheat protection, high efficiency, time and energy saving, increase service life for electrical machinery.
- 4.Safety lock device ensure safe and reliable operation

READ BEFORE USE

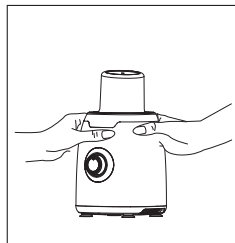
- 1.The machine has safety protection device. The electrical machine does not work when fastener does not closely fasten top cover or knife stand is not screwed tightly to ensure safety use.
- 2.Please check if power supply is in line with rated voltagebefore use to avoid damage.
- 3.Clean all dismountable parts (refer to "maintenance and clean")
- 4.Please read carefully "Key parts name and location" picture for assembling.
- 5.Please read carefully "instruction"before use.

WORKING TIME

The machine has 0 position, 1 position, 2 position and P button switch(0 is stop, 1 weak, 2 strong, P point mobility). Select point mobility and strong position for meat stirring, mincing, and grinding. Process for 10 seconds and then stop for 5 seconds, turn on the machine after 1 minute rest when processing for one minute. Select point mobility or strong position for stirring vegetable, fruit and soybean milk. Select weak position for stirring eggs. Select strong position for juice extracting. Please stop for 15 minutes when the above jobs are done three times consecutively. Turn on the machine again after cooling of electrical machinery. In this way we can prolong the service life of the machine.

GRINDING

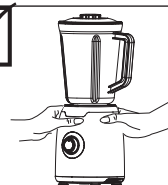
1. Grinding cup is suitable for grinding dry food into powder.
Put 150 g into grinding cup every time, cover grinding blade base and screw it tightly clockwise. Then put into main machine as shown in the picture. Screw it tightly with your hand holding grinding cup. Turn on the switch and then grinding begins.
2. When grinding oily materials like sesame, putting one spoon of white sugar into the cup will have better effect.



Note: if the machine is running idle, that is, the blade does not touch food, please turn down the machine and cut off power supply. Loose the food and then turn on the machine to continue grinding.

STIRRING

1. Firstly check if position switch is off (if switch is restored to origin position)
2. Put sealing ring into knife base slot, and then screw the stirring cup tightly with knife stand.
(Lock tightly clockwise and loose anti clockwise)
Cover stirring cup and feeding lid.
3. Hold knife stand and screw it clockwise into main machine. Don't hold vessel to dismantle it, otherwise vessel will disconnect with knife stand and food in the cup will exude.



STIRRING EGG

Put the egg into stirring cup and appropriate boiled water Then add some flour. Cover the cup lid tightly. Press weak position switch for about one minute.

STIRRING VEGETABLES & FRUITS

Peel fruit and vegetable and tip seed firstly, cut into dice. Add 250g-350g of it and appropriate boiled water. Assemble according to assembling and use instruction, then turn on the machine.

IMPORTANT TO NOTE

- 1.This machine is unavailble for the weakness, unresponsive or psychopathic perosn(including children), unless under the direction or help from the person who have the responsibility for security. Children should be overseen, so it can be testified that they are not playing with it.
- 2.Put the machine in the stable surface and operate as per the above procedure.
- 3.Make sure that screen is locked with rotating stand before operation. The blade does not hard contact with transparent cover. Cover transparent lid, fasten the fastener then turn on the machine.
- 4.Do not wash main motor and power plug with water or other liquid. Only wipe them with damp cloth.
- 5.Please check fruit grounds or juice in middle holder or grounds cup is too full. Turn off the power supply and clear it if it is too full.
- 6.Don't remove the cup lid during operation. Don't put the hand or other vessel into stirring cup and feeding hole when power is still on. Otherwise accident or damage will happen.
- 7.This product must not be idle nor exceed the requirement in processed amount (normally, less than 60 percent would be best). Otherwise, bearings of motor and blade will overheat.
- 8.Blades are very sharp. In order to avoid injury, when washing blades, please put them under water tap to wash. Do not wash them with hand.
- 9.Please don't leave when the machine is working. Don't let children operate the machine.
- 10.It is prohibited to run idle or overload when stirring, meat stirring and grinding.
- 11.Remove power plug and then pour out the food after every operation.
- 12.Do not put any parts into high temperature sterilizer to sterilize or boiler to steam and boil for sterilization.
- 13.The machine is not recommended for other usage.

IMPORTANT TO NOTE

14. In order to prolong useful life of the machine, there is overheat protecting unit on motor. When motor runs too long or with too heavy load, the temperature reaches warning value, motor will stop automatically. After motor stops, pull out power supply plug. Wait for motor to cool (about 20 to 30 minutes), then use again.
15. If power supply flexible cord is damaged, to avoid danger, do ask factory, its service department or other special person to replace.
16. If any problem with this machine, do not disassemble by yourself, contact the service department or after-sale service department of this Company.

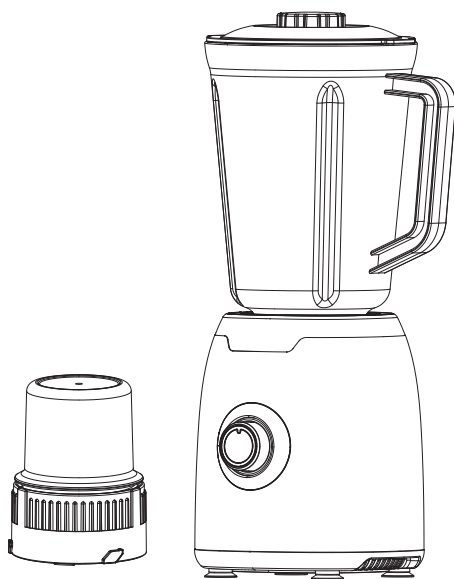
MAINTENANCE AND CLEANING

1. It is recommended to use the machine often to keep electric machinery dry.
2. Please put the machine in the dry place to avoid electric machinery gets wet and moldy.
3. Don't flush the main machine with water. Wipe it with wet cloth. Other parts can be washed with water like fruit pushing bar, top cover, middle holder, grounds cup, etc.
4. It is recommended to dismantle blade in stirring cup, meat stirring cup and drop edible oil to blade shaft, bearing for lubrication.
5. Add appropriate warm water and detergent when cleaning stirring cup which is loaded into main machine. Cover the cup lid and press switch. Water it with fresh water after stirring for 30 seconds.



400W 搅拌机

EBL3415W

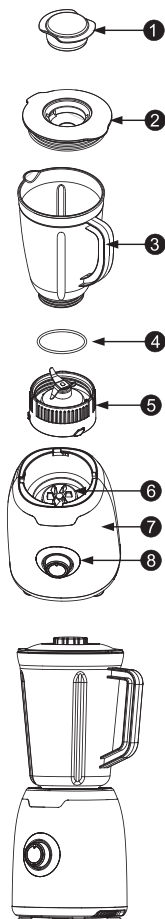


使用产品前，请仔细阅读以下使用说明书，并妥善保管以供日后参考。

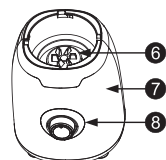
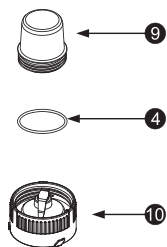
本产品仅限家庭或类似场所使用。

执行标准：GB 4706.1-2005，GB 4706.30-2008

各部件名称及安装示意图



搅拌器



研磨器

- 1、加料盖
- 2、搅拌杯盖
- 3、豆浆网
- 4、密封圈
- 5、搅拌刀座

- 6、转座
- 7、主机
- 8、档位开关
- 9、研磨杯
- 10、研磨刀座

注：为了达到最好的料理效果，请按上述说明来组装刀座和杯。

性能特点

- 1、本机具有制研磨、搅拌等多功能，创意生活，随心选择。
- 2、设计精细简洁、美观大方、组合式结构、操作简单、清洗方便。
- 3、采用高转速及设有过热保护的电机，高效、省时、省电，同时提高电机的使用寿命。
- 4、特设有开关启动安全锁装置，确保使用安全可靠。

使用前须知

- 1、本机设有安全装置，刀座未旋紧时，电机不能转动，以确保使用者安全。
- 2、为避免损坏，使用前应先检查电源是否与额定电压（220V~）相符。
- 3、清洗所有可拆卸部件（请参阅“维护保养、清洗”一节）。
- 4、为节省包装空间，刀座与杯已拆分，组装时请按“主要部件名称及位置”图来组装使用，以达到最好的料理效果。
- 5、使用前敬请认真阅读“注意事项”。

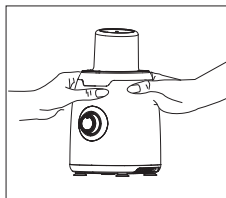
启动与工作时间

本机设有O(0)档、I(1)档、II(2)档及⚡(P)点动按键开关（O(0)为停止、I(1)为弱档、II(2)为强档、⚡(P)为点动）。搅肉、切碎、研磨选择点动和强档，工作时间按照开10秒停5秒原则进行，使用1分钟后需要停止1分钟再开机工作。搅拌蔬菜、水果、豆浆可选择点动或强档位置，搅拌蛋类等可选择弱档位置，工作时间按照工作1分钟后停止1分钟再开机工作。

以上工作连续进行三次后，需停止工作15分钟，待电机冷却后再工作，这样可以延长本机使用寿命，使它更有效地为您服务。

研磨

- 1、研磨杯适合将干性食物研磨成粉末。使用时，每次放入150克于研磨杯中，盖上研磨刀座，顺时针方向拧紧；再将其按图示位置装上主机，顺时针旋紧，用手按紧研磨杯，打开按键开关，即可研磨。
- 2、研磨芝麻及核桃等油性原料时，放入一汤匙的白砂糖在杯内一起研磨效果更佳。

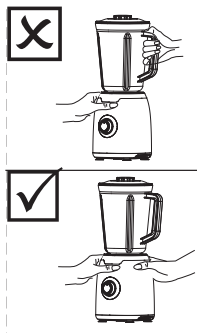


注意：当研磨食物发现空转，即刀片碰不到食物时，应立即停机，切断电源，将食物拌松再开机研磨。

搅拌

- 1、先检查档位开关是否处于停止状态（开关是否弹起到位）。
- 2、先将密封圈放入刀座槽内，然后将搅拌杯旋入刀座内旋紧（顺时针为锁紧，逆时针为松开），盖上搅拌杯盖与进料盖。
- 3、手持刀座顺时针旋入主机上（逆时针为松开），切勿手持容杯进行卸除，否则会造成容杯与刀座分离，杯内食物渗出。

注意：为达到最好的搅拌效果，建议用户的最大搅拌容量不要超过1000mL。



搅拌蛋类

将鸡蛋去壳放入搅拌杯内放入适量的凉开水，再放入一些生面粉。将杯盖盖紧，然后按下弱档开关约1分钟之后即可。

搅拌蔬菜、水果类

将您需要搅拌的蔬菜、水果去皮去籽，切成块或段状，每次放入250克-350克，加入适量凉开水后，按“装配使用”方法装配完毕，开机搅拌。

注意事项

- 1、使用前，应先检查电源电压与本机标示的额定电压是否相符（220V~），且额定电流应大于5安培。
- 2、使用前，必须将本机置于平稳的台面上，按上述方法进行操作使用。
- 3、本机使用前因电机运转在磨合阶段，所以可能会有轻微异味及火花，属正常现象，待电机使用一段时间后，上述现象会消失。
- 4、使用中，不要揭开杯盖。在未切断电源时，切勿把手或其它器具放入搅拌杯内，否则会发生伤害事故或损坏本机。
- 5、为延长本机的使用寿命，电机上装有超温保护装置，当电机长时间或超负荷运转时，超过警戒温度会自动断开电源。电机停止工作后，须将电源插头拔下，待电机冷却后（约30分钟）再重新使用。
- 6、所有配件严禁放入高温消毒柜内消毒或放在锅内蒸煮消毒。
- 7、在使用本机时使用者请勿离开，切勿让儿童操作本机。

注意事项

- 8、本机在搅拌、搅肉、研磨时严禁空载运行及超负荷使用。
- 9、每次操作完毕，需将电源线插头拔掉，方可将食物倒出。
- 10、刀片非常锋利，为避免危险，清洗刀片时，请将刀片放在水龙头下冲洗，切勿直接用手清洗。
- 11、不可将本机做用途以外的使用。
- 12、若电源软线损坏，为避免危险，必须由制造厂或其维修部或类似的专职人员来更换。
- 13、本器具不预备给体能弱、反应迟缓或有精神障碍的人（包括儿童）使用，除非在对其负有安全责任的人员的指导或帮助下安全使用。儿童应该被监督，以保证他们不玩耍器具。
- 14、本机若出现故障，切勿自行拆卸，应与本公司设立的维修部或本公司售后服务部联系。

维护保养、清洁

- 1、本机宜经常使用，以保持电机干爽。
- 2、如长期不用，请将本机保存在干燥通风处，以防电机受潮发霉。
- 3、主机严禁用水冲洗，清洁时只宜使用湿布擦拭，其它部件可直接用水冲洗。
- 4、本机宜每月将搅拌杯、碎肉杯、研磨杯的刀架拆下，滴上少量食物油在刀轴、轴承内，以保证其润滑使用。
- 5、清洁搅拌杯时，加入适量温水和食具洗涤剂，装上主机，盖上加料盖，按下开关，搅拌30秒左右，用清水冲洗干净即可。

技术参数

具体技术参数以产品铭牌为准

执行标准：GB4706.1-2005
GB4706.30-2008

Product Warranty

The Warranty Card is not provided in the product packaging. You can register the product warranty online at our website <https://www.europace.com.sg/ewarranty/> within 7 (seven) days from the date of purchase. You will enjoy an additional 3 months of the product

standard warranty when you register online. Please produce your E-warranty registration when requesting for repair and service at our Service Centres nearest to you.

In the event, if you are unable to register the product warranty online you must produce your purchase receipt/tax invoice and such other documentary proof of purchase of the appliance when requesting for repair and service.

Product Warranty Coverage

You may find out your product warranty coverage at the link below before calling our Customer Service Hotline (65) 6457 3678 or visiting our Service Centre.

http://europace.com.sg/ewarranty/src/cupload/settings_pdf/1/1-1-2c899-1563960978-WARRANTY-COVERAGE-19_0221.pdf

TERMS & CONDITIONS OF WARRANTY (THIS WARRANTY IS VALID IN SINGAPORE ONLY)

Your appliance is warranted against faulty design, workmanship or materials for a period of

12 months unless otherwise stated from the date of purchase, subject to the following terms & conditions herein below:-

- 1) That the owner shall register the product warranty online at our website www.europace.com.sg within 7 (seven) days from the date of purchase.
- 2) That the appliance shall be used solely for domestic purposes and not for commercial purposes or any other purposes whatsoever and used strictly under the instruction for operation as provided by the manufacturers or the appliance.
- 3) That if any time during the warranty period any part or parts of this appliance is removed, tampered, modified, adjusted, altered, handled or repaired in any way whatsoever by any persons other than those authorized by Strategic Marketing (S) Pte Ltd, this warranty shall immediately cease to be valid and become void.
- 4) That the owner shall produce the E-warranty registration or tax invoice/receipt and such other documentary proof of purchase of the appliance to our satisfaction as we may deem necessary when requesting for repair and service.
- 5) That our decision on all queries relating to complaints as to defects either of workmanship or of materials shall be conclusive and the owner shall agree to abide by such a decision. Any appliance or defective part which has been replaced shall become our property.

- 6) The terms and conditions of this warranty shall be contained exclusively in this document and no other presentation of provision, either written or otherwise, regardless of the origin of the same, shall be accepted as either adding or removing from these terms and conditions.
- 7) That this warranty shall cease to be valid and void if the appliance is exported or relocated from Singapore.
- 8) That there shall be no removal, alteration, defacement, or made illegible/tampered or any kind of the serial number on the appliance.
- 9) That the owner shall be fully responsible for the due delivery and collection of the appliance for any work done according to this warranty. Transportation expenses incurred for delivery or handling the appliance are chargeable to the owner.
- 10) Transportation and labour charges apply after the full parts warranty expires. Refer to <https://www.europace.com.sg/ewarranty/> for more information.

In addition to the above, this warranty shall be subjected to the following limitations and exclusions:-

a)The appliance shall be warranted by STRATEGIC MARKETING (S) PTE. LTD. from date of purchase only for a period of:-

10 years - Heating Element warranty applies to selected models of Storage Water Heaters.

- Tank Leakage warranty applies to selected models of Storage Water Heaters.

8 years - Motor warranty applies only to selected models of Stand Fans (Walk-in warranty).

10 years - Compressor warranty applies to selected models of Refrigerators.

6 years - Motor warranty applies only to selected models of Stand Fans (Walk-in warranty).

- Compressor warranty applies only to selected models of System Air Conditioners and Portable Air Conditioners.

5 years - Compressor warranty applies to Refrigerators, Freezers, Wine Coolers, Portable Air Conditioners & Casement Air Conditioners (Outdoor warranty). Transportation is chargeable from the 2nd year to 5th year.

- Compressor warranty applies to Dehumidifiers (Walk-in warranty)

- Motor warranty applies only to selected models of Stand Fans (Walk-in warranty).

3 years - Full parts warranty applies only to selected models of Air Purifiers & selected models of Dehumidifiers (Walk-in warranty).

- Heating Element warranty applies only to selected models of Garment Steamers (Walk-in warranty).

- Motor warranty applies only to selected models of Jet Turbine Fans & selected models of Air Coolers (Walk-in warranty).

2 years - Motor and internal parts warranty applies only to selected models of Stand Fans, selected models of Oscillation Power Fans & selected models of Air Purifiers (Walk-in warranty).

- Heating Element warranty applies to selected models of Electric Ovens & selected models of Kettle Jugs. (Walk-in warranty)
- Motor warranty applies only to selected models of Jet Turbine Fans (Walk-in warranty).
- Full parts warranty applies only to Wine Coolers of 34 Bottles & above.

1 year - Full parts warranty applies to *Lifestyle Products (cash & carry items), Small Kitchen Appliances, Fans, Air Coolers, Wine Coolers of 20 Bottles & below, Mini Bar Fridge (Walk-in warranty)

- Full parts warranty apply to Refrigerators, Air Conditioners & Freezers (Outdoor warranty).

Check out the warranty coverage of your appliance at www.europace.com.sg

b) The owner waives all or any claims to compensation monetary or otherwise which he/she may be entitled to and shall agree to accept any compensation whatsoever by way of additional repairs or otherwise which we in our absolute discretion may deem fit to offer. The giving of compensation shall be subjected to the other provisions of the warranty.

c) This warranty shall not be transferable, negotiable or assignable to any third party.

d) The warranty does not include transport delivery or handling charges incurred in the transportation of the appliance to and from Strategic Marketing (S) Pte Ltd.

e) Damage caused during transit where the appliance is transported for servicing, repair, or in relation thereof or connection therewith.

f) In respect of refrigerator and air conditioner only, upon the expiry of 12 months from the date of purchase, this warranty will not cover transport, refrigerant and labour to install a new compressor.

g) This warranty will not cover chemical cleaning, maintenance service, general service and overhaul, which if confirm is chargeable.

h) Defects or fault in the appliance which has been used for commercial purposes or which have been rented/leased or which have been otherwise subject to other than household use.

i) Claims for damaged/missing parts after 3 days from the original date of goods received will not be valid.

j) This warranty and the Replacement Scheme does not particularly cover damages and/or defects arising from

- Usage of wrong electrical supply/voltage.
- Usage not according to the Instruction Manual provided by the manufacturers.
- Misuse, accidents, negligence, abuse, improper installation, or any manner of tampering.

- Normal wear and tear.
- Corrosions rusting or stains.
- Scratches, dents on the unit body, casing or paintwork of the appliance.
- Act of God, fire, flood and civil unrest.
- We shall not under any obligation, legal or otherwise to repair this appliance or one to one exchange if the same shall be required as a result of losses, damages, and malfunctions arising from any of the causes mentioned in the paragraph.

k) All accessories, external parts and extruded parts such as front panel, casing, door, glass cover, glass door, cable/cord assembly, batteries, adaptor, plug, remote control, control knob, buttons, filter, UV lamp, oven tray, wooden rack, exhaust hose, fixtures, panels, cover, lid and lever, plastic parts, fan blades, blade guard, inner pots, brushes, water tanks, attachments made of glass, plastic and/or porcelain, detachable parts, and other option items are excluded from this warranty.

All services provided after the warranty period will be chargeable at standard rates determined by STRATEGIC MARKETING (S) PTE. LTD.

The terms and conditions of this warranty shall be varied except with the written and express consent or agreement of Strategic Marketing (S) Pte. Ltd. While Strategic Marketing (S) Pte. Ltd. endeavours to repair any defects after the warranty period, it is subject to availability.

It is hereby expressly provided that any liability of Strategic Marketing (S) Pte. Ltd. for any loss or damage whatsoever arising from, relating to or in connection with the purchase of the appliance shall not exceed the purchase price (excluding installation costs) of the appliance. Similarly, Strategic Marketing (S) Pte. Ltd.'s liability for any breach of this warranty shall be limited to the purchase price (excluding installation costs) of the appliance.

* Lifestyle Products - Garment Steamer, Humidifier, Dehumidifier, Air Purifier, Mini Bar-Fridge.

* Walk-in warranty - Customers are obliged to bring the warranted products to Strategic Marketing (S) Pte. Ltd. Service Centre for repair/service during the warranty period.



**Scan QR Code for
the online Warranty
Registration**

For more technical details / enquiries, please visit:

EUROPACE SERVICE CENTER

10 Changi South Street 3 #06-01 Singapore 486147

Tel: (65) 6457 3678 | Fax: (65) 6741 0728

Operating Hours: Monday - Friday: 9am - 5pm | Saturday: 9am - 12pm

Email: service@strategic.com.sg

www.europace.com.sg | www.strategic.com.sg

RELATED PRODUCTS & MAIN CONTACT HOTLINE

System Split Aircons | Tel: 6858 0801 | Email: systemac@strategic.com.sg (Twin City)

Portable & Casement Aircons | Tel: 6291 0800 | Email: portableac@strategic.com.sg (Jia Yue)

Refrigerators, Washing machines, Cookers & other major appliances |

Tel: 6289 0802 | Email: mda@strategic.com.sg (TnG)

Celebrate Fine Living!

This product is distributed by Strategic Marketing (S) Pte Ltd

If there is any technical amendment for the product, it will be edited on the updated version of the instruction manual without prior notice. The pictures shown in the instruction manual is only for illustration purpose only. If the appearance or colour of the product is modified, please refer to the actual appliance as a standard.