



Multi-Function Induction Cooker | EIC 213P

Instruction Manual

Thank you for purchasing EuropAce Induction Cooker.
For safety purpose, please read this operating instruction manual carefully before using and keep it for future reference.

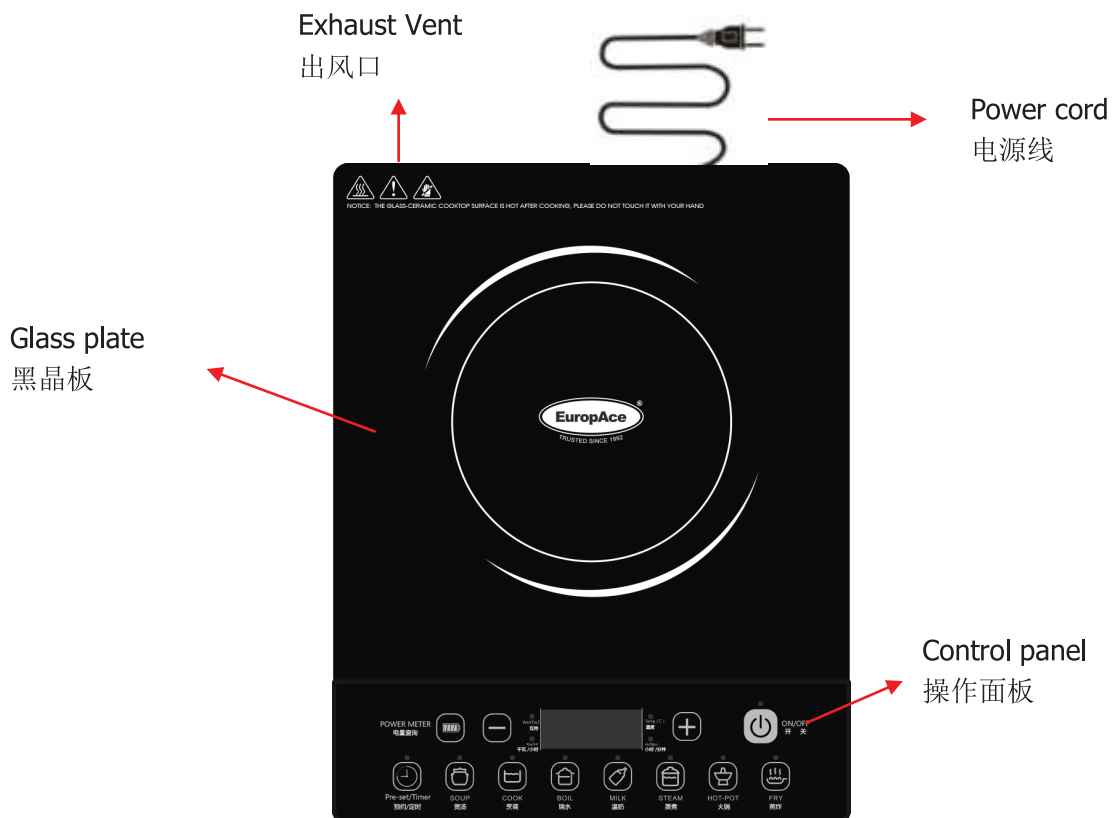


RELISHING YOUR COOKERY
Celebrate Fine Living!

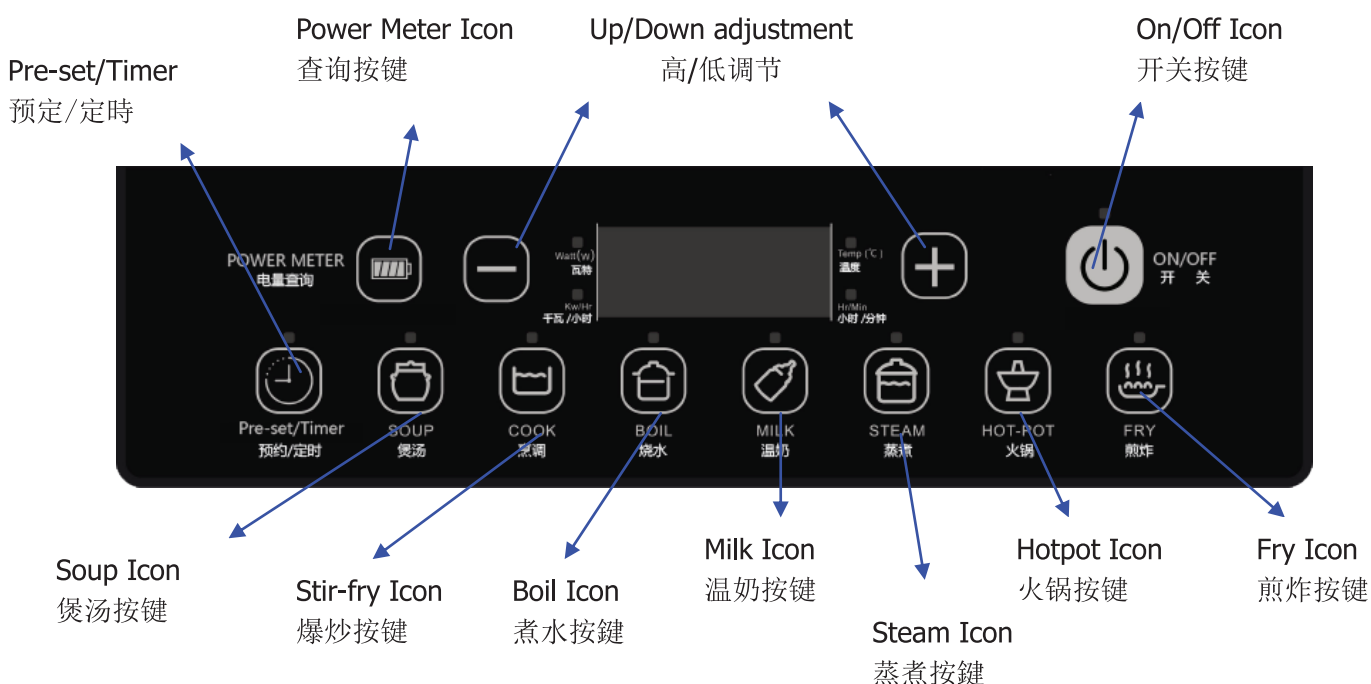


1. Product Configuration 产品配置

Body 机身



Control Panel 操作面板



Safety Cautions 安全注意事项

Warning 警告:

Switch off the induction cooker in case of any crack on the cook-top panel.

当晶板表面出现裂缝时请切掉电磁炉电源

1. Do not place the unit in any place that is near gas or hot environment in order to avoid damages or malfunction.
请勿把产品放置在任何几斤气体或热环境中,以免损坏机器或引起机器故障。
2. To reduce the risk and damage, this plug should be fitted into an individual outlet. The rated electrical current is not less than 13A
为了减少损坏,插头应该插入单个电源插座,额定电流不少于13A。
3. Place the unit on a level surface, and with at least 10cm gap from the surrounding.
将机器放置于水平面,且机器底部和水平面需相距至少10CM。
4. Do not immerse the appliance and electric cord in liquid, or allow liquid to get into the internal componet, the power cord must be plugged out before cleaning .
勿将机器或电源线浸泡在液体中,防止机身进水,在清洁前需要把电源插头拔掉。
5. Do no obstruct gas vent to prevent damages.
在使用机器时勿将出风口堵住,否则引起危险。
6. Please uncap the tin cover before heating tinned food.
请加热罐头食品时打开盖子,以免危险。
7. If unit still malfunction after troubleshooting, please immediately contact with our service center, do not repair the unit to avoid any damages.
如果机器在自检后仍不能工作,请立即与我们的服务点联系,为了避免危险,请勿拆开机器。
8. If the power cord of the appliance is damaged, it must be replaced by the manufacturer, its service agent or similar qualified person.
如果电源线损坏,请使用厂家推荐的电源线。
9. Do not heat metal directly or indirectly on the unit.
当金属直接或间接加热 ...
10. Do not place the unit on any metal plate while using, also the nonmetal pad within 10cm.
请勿将电磁炉放在任何金属平台上使用,包括在其上垫厚度小于10cm的非金属垫。
11. Do not cook with an empty pot, it will cause malfunction or danger to the users.
请勿使用空锅烹煮,以免引起故障或危险。
12. Always clean the unit to avoid any dirt built-up.
请经常清洁避免灰尘进入风机而机器影响正常工作。
13. Do not touch the plate while the unit is working to avoid getting burned.
机器在工作时不要碰触晶板面,以免烫伤。
14. Unit is not to be used by children
为了避免烫伤或危险,勿让儿童自己操作机器。
15. User using cardiac pacemaker, please consult doctor first before using the unit.
如果用户携带心脏起搏器,请在使用机器前和医生确认没有影响。

-
16. Do not operate the unit on the gas stove to avoid damage and danger to the user.
请勿将机器放置于煤气炉上使用,以免危险。
 17. Please do not place paper, cloth or other articles directly under the bottom of the pan to get heated, to avoid fire hazard.
请勿在加热时在锅具底部放置纸张、抹布或其他物质,以免引起火灾。
 18. Do not place the unit on the cloth, carpet to avoid blocking the gas vent.
请勿将机器放置在抹布或地毯上以免堵住出风口。
 19. Do not operate the control panel using any sharp implements.
请勿使用锋利的物品接触操作面板。
 20. Do not place any metal on the unit while operating.
机器在使用过程中勿将金属放置上去。

2. Product Operating Instructions 操作指导

2.1 ON/OFF Function:

Connect power plug, the indicator above the [On/Off] will illuminate and emit a “Beep” sounds, indicating that cooker is in connection with a power source. Place cookware in the centre of cooking hob. Press [ON/OFF] key and the induction cooker enters standby mode. The indicator of [ON/OFF] still light up and LED display shows “----”. All the modes can be cancelled when press [ON/OFF] key under the working mode.

插上电源,机器发出“哔”一声,开关灯亮,机器处于上电状态。在晶板中间放置合适的锅具,按开关键一次,机器进入待机状态,开关灯保持长亮,数码管显示“----”。在任何模式的工作环境下,按开关键可取消工作。

2.2 Fry Function:

Press the [Fry] key, the fry indicator will illuminate. The digital display shows “270°C” representing that the default temperature is 270°C. User can press [+] or [-] key to adjust the temperature level. The range is from 60°C to 270°C.

Press [Time setting] key first, and then press [+] or [-] key to adjust the cooking time from 0:00 to 23:59.

煎炸:按煎炸键进入煎炸功能,煎炸灯亮,显示器显示270°C,代表机器在默认温度270°C下工作。可按+或-调节温度档位,可调节范围是60°C到270°C。先按定时按键,接着按+或-调节工作时间,范围是0:00到23:59。

2.3 Hot-pot Function:

Press the [hot-pot] key under standby mode, the hot-pot indicator will illuminate. The digital display shows “1300” representing that the default power is 1300W. User can press [+] or [-] key to adjust the power level. The range is from 120W to 2100W.

火锅:在待机状态下,按火锅键进入火锅功能,火锅灯亮,数码管显示1300,代表机器在默认功率1300W下工作。可按+或-调节功率档位,调节范围是120W到2100W。先按定时按键,接着按+或-调节工作时间,范围是0:00到23:59。

2.4 Steam Function:

Press the [Steam] key, the steam indicator will illuminate. The digital display shows “0:30” representing that the unit is working under default power 2100W. The default time is 30 minutes.

蒸煮:按蒸煮键进入煲汤功能,蒸煮灯亮,数码管显示0:30,代表机器在默认功率2100W下工作,默认工作时间是30分钟。先按定时按键,接着按+或-调节工作时间,范围是0:10到1:00。

2.5 Milk Function:

Press the [Milk] key, the milk indicator will illuminate. The digital display shows “0:20” representing that the unit is working under default power 1000W, no power and temperature adjustment allowed. The default time is 20 minutes.

Press [Time setting] key first, and then press [+] or [-] key to adjust the cooking time from 0:00 to 23:59.

温奶:按温奶键进入温奶功能,温奶灯亮,数码管显示0:20,代表机器在默认功率1000W下工作,此时功率和温度不可调节。默认工作时间为20分钟。先按定时按键,接着按+或-调节工作时间,范围是0:00到23:59。

2.6 Boil Function:

Press the [Boil] key, the boil indicator will illuminate. The digital display shows “A1” representing that the unit is working under default power 2100W. After boiling is done, the unit will enter into standby mode.

温奶:按温奶键进入温奶功能,温奶灯亮,数码管显示0:20,代表机器在默认功率2100W下工作。当煮水结束后,机器进入待机状态。

2.7 Cook Function:

Press the [Cook] key, the cook indicator will illuminate. The digital display shows “2:00” representing that the unit is working under default power 2100W. The default time is 2 hours.

Press [Time setting] key first, and then press [+] or [-] key to adjust the cooking time from 0:30 to 3:00.

烹调:按烹调键进入烹调功能,蒸煮灯亮,数码管显示2:00,代表机器在默认功率2100W下工作,默认工作时间为2小时。先按定时按键,接着按+或-调节工作时间,范围是0:30到3:00。

2.8 Soup Function:

Press the [Soup] key, the soup indicator will illuminate. The digital display shows “2:00” representing that the unit is working under default power 2100W.

Press [Time setting] key first, and then press [+] or [-] key to adjust the cooking time from 0:00 to 23:59.

煲汤:按煲汤键进入煲汤功能,煲汤灯亮,数码管显示2:00,代表机器在默认功率2100W下工作。默认工作时间为2小时。先按定时按键,接着按+或-调节工作时间,范围是0:00到23:59。

2.9 Pre-Set/Timer Function:

Pre-set time (Apply for all modes) :

Press [Time setting] when the unit is in connection with a power source, after setting started cooking time, choosing the program. After time reaches “0”, the unit will start the cooking function.

Timer(Apply for all modes except Boil):

Press [Time setting] under any working state, you can set the time to stop the unit working.

press [+] or [-] key to set the time, [+] for minutes and [-] for hours, the time can be adjusted from 1 minute to 23 hours and 59 minutes.

预约(适用于所有功能):在上电状态下按时间设置按键,设置所需预约的时间,选择对应的功能。当时间倒数为0时机器按所选功能开始工作。定时(除了煮水功能,适用于其它所有功能):在工作状态下,可按时间设置按键设置停止工作的时间。可按+或-调节时间,按+调节分钟,按-调节小时,可调节的时间范围是1分钟到23小时59分。

2.10 Power meter:

Press the [Power meter] key under working mode, to check the power voltage for this cooking time. Press the [Power meter] twice under working states to display the voltage of the working of the stove, the unit is V.

查询:在工作状态下按“查询”键一次,可查询当前工作时间内的电量;在工作状态下按“查询”键两次,数码管显示当前工作电压,单位是V。

3. Cookware 锅具的选择

Appropriate cookware 合适的锅具

-Material 材质:

Metal, ferromagnetic stainless steel or cast iron

金属、导磁的不锈钢或铸铁

-Shape 形状:

Flat bottom with a diameter of 12 cm or more, cookware bottom diameter should not exceed 26 cm and must not weigh over 6kg (with food). 底部直径必须在12-26厘米内的锅具,锅具重量(连盛载实物)不能超过6公斤。



Inappropriate cookware 不合适的锅具

-Material 材质:

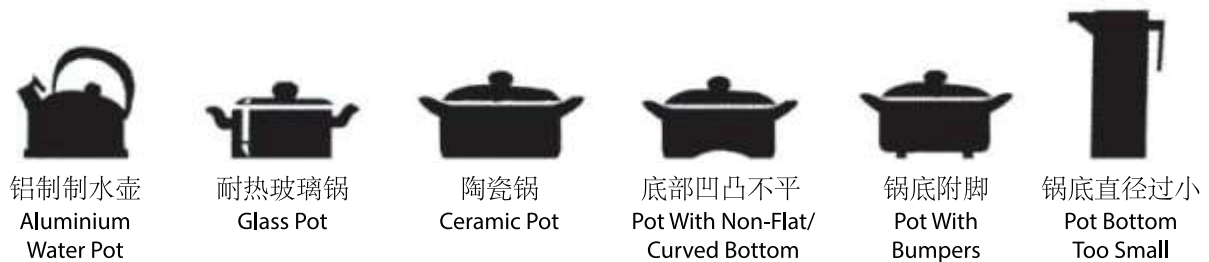
Non-metallic, non-ferromagnetic, ceramic, glass, aluminum or brass

非铁质金属、不能导磁的、陶瓷、玻璃、铝或铜

-Shape 形状:

Bottom not flat or uneven, or bottom diameter smaller than 12 cm

底部凹凸不平或底部直径少于 12 厘米



4. Safety Cautions 安全警告

- The appliance is not to be used by persons (including children) with reduced physical, sensory or mental capabilities, or lack of experience and knowledge, unless with proper supervision or instruction

本产品并不是为体质、感觉或智力有障碍人士或缺乏经验(包括小孩)或相关知识的人士使用,除非他们曾经接受负责安全人士的监督或指示。

- Keep Unit away from unsupervised Children

被监管下的儿童不宜使用。

- The temperature of the cook top surface might be hot when the appliance is operating.

机器在使用过程中,晶板表面温度会高。

- The unit is not intended to be operated by means of an external timer or separate remote-control system

请勿使用外置定时器或遥控系统来操作本产品。

- If the glass surface is cracked or damaged, switch off the appliance to avoid the possibility of electric shock

如果晶板破裂,请立即停止使用本产品,避免产生电击危险。

- Metallic objects such as knives, forks, spoons and lids is not to be placed on the glass surface as they can get heated up

金属物体如刀、叉子、勺子和盖子不能放置在产品上,以免受热。

- If the supply cord is damaged, it must be replaced by the manufacturer, its service agent or similarly qualified persons in order to avoid a electrical hazard.

如果电线有破损需要厂家、服务中心代理或有相关资质的人员进行更换,以免发生危险。

5. Maintenance and Daily Care 保养及日常清洁

Remove the power plug prior to cleaning the unit. Do not clean it until the surface cools down.

清洁产品时需要将电源线插头拔掉,在晶板冷却后方可清洁晶板面。

1. Glass plate, panel and the housing unit 晶板、操作面板和面壳:

① Soft cloth for stains.

清尾污渍用软抹布软布为轻微的污渍

② For greas, dirt, and blot, clean by using a damp cloth with neutral detergent.

油腻、污垢、污点用中性洗涤剂和干净的湿布

2. While the radiator-fan is working, dust and dirt may be trapped on the exhasut vent, please clean it with a brush or cotton stick regularly.

散热器风扇工作时,灰尘和污垢会通过出风口进入,请定期清洁。

3. Do not immerse the unit in water directly to avoid damaging it.

切记不要直接用水清洗产品,以免损坏。

4. To protect induction cooker, be sure to have a good contact between plug and socket before using.

为了保护电磁炉,在使用前确保接触插头和插座是良好的。

5. To extend the appliance's using life, do not pull out the power cord directly during operation. Press the "ON/OFF" button first, then pull out the power cord.

在使用时不要直接拔掉电源,为了延长机器使用寿命,请先按开关键关掉机器,然后再拔出插头。

6. The internal fan would still working to cool the plate, please remove the plug after the fan stops working.

为了使操作时间长,风扇仍为冷却板工作,最好塞后风扇停止工作 为了延长操作时间,风扇会继续工作散热,请在风扇停止工作后拔出电源插头。

7. Please remove out the power cord when the unit is not in use for long time.

长时间不适用时,请拔出电源插头。

6. Troubleshooting and Treatment 故障排除和维修

During operations, if any error occurred, please check the following table before calling for service. Below are common errors and the checks to perform.

在操作期间,如果出现任何错误代码,在致电服务中心前,可按照以下表格检查。 以下是常见的错误和检查指导:

Symptoms 故障现象	Check points 检查要点	Remedy 处理方法
---------------	-------------------	-------------

<p>After connecting the power and pressing the “power” key, the appliance has no response. 连接电源线后,按开关键,机器无响应</p>	<p>Check the electricity supply? 是否停电?</p>	<p>Use after resuming the electricity. 待电力恢复后使用。</p>
	<p>Is the fuse broken? 保险丝是否断路?</p>	<p>Check the cause carefully. If the problem cannot be fixed, please contact Service Centre for checking and repairing. 小心检查原因,如有需要,请联系服务中心检查及维修</p>
	<p>Is the plug firmly connected? 插头是否松脱?</p>	
<p>Heating being interrupted during normal usage and a “Beep” is be heard. 开启电磁炉后不加热,并发出哔的声音</p>	<p>Incompatible cookware or no cookware is used? 是否忘记放置锅具或锅具不合适?</p>	<p>Replace with compatible cookware. 放上锅具或更换合适的锅具</p>
	<p>Is the cookware placed on the center of the heating zone? 锅具是否放置于不正确位置?</p>	<p>Ensure the cookware is placed at the center of the heating zone. 将锅具放置于产品面板标识的位置</p>
	<p>Is the cookware continually removed from the heating zone? 加热的锅具是否经常被移走?</p>	<p>Ensure the cookware is placed at the center of the heating zone. 将锅具放到炉头适当的位置上</p>
<p>No operation during heating 在正常运作时产品停止操作</p>	<p>Is the cookware empty or the temperature too high? 是否加热空锅或事物温度过高?</p>	<p>Check whether the appliance is use incorrectly. 请检查是否错误使用</p>
	<p>Is the air intake/exhaust vent clogged or a layer of dirt accumulation? 进风口或出风口是否被阻塞或堆积了脏物?</p>	<p>Ensure the air intake/exhaust vent is not clogging with dirt. Operate the appliance again after cooling down. 清除堵塞的脏物,晶板冷却后重新启动机器</p>
	<p>Is the cooker working over 2 hours without any user input? 是否已查过 2 小时没有进行操作指示?</p>	<p>Reset cooking modes or use timer function. 请重新选择烹煮功能或选用定时功能</p>
<p>Error codes occur. 故障代码</p>	<p>E1 Under-Voltage 低压 E2 Over-voltage 高压 E3 IGBT sensor open circuit IGBT传感器开路保护 E4 Temperature sensor of coil or signal damaged. 线盘温度感应器或信号损坏 E5 May temperature sensor of coil or signal damaged. 可能线盘温度感应器或信号损坏 E6 Top plate overheat 干烧保护 ---- Without cookware or Incompatible cookware used 无锅或锅具不合适</p>	<p>When showing error signal E4, E5 and E6 , check whether the cookware is suitable, or switch on the appliance again after it cool down. When showing E1, E2 and E3, please contact Service Centre for checking and trouble shooting. 当出现 E4、E5或E6, 请检查是否锅具问题, 或待温度下降后,再尝试重新启动本产品。当出现 E1、E2或E3, 请联系服务中心进行检查及维修</p>

If the above remedies/controls can not fix the problem, unplug the appliance immediately and, contact Service Centre for inspection and repairing, please note the error code and report it to Service Centre. To avoid any danger and damage to the unit, do not disassemble or repair it by yourself.

如果按照上述处理方法、操作仍然无法正常使用,请实时关闭电源开关,联络服务中心进行检查和维修,并将故障代码告知服务中心。切勿自行拆卸及维修产品,避免产生任何危险及对产品造成损坏。

7. Product Specifications 产品规格

Model 型号	EIC 213P
Rated Voltage 额定电压	220-240V~, 50/60Hz
Power 功率	2100W

Product Warranty

The Warranty Card is not provided in the product packaging. You can register the product warranty online at our website <https://www.europace.com.sg/ewarranty/> within 7 (seven) days from the date of purchase. You will enjoy an additional 3 months of the product standard warranty when you register online. Please produce your E-warranty registration when requesting for repair and service at our Service Centres nearest to you.

In the event, if you are unable to register the product warranty online you must produce your purchase receipt/tax invoice and such other documentary proof of purchase of the appliance when requesting for repair and service.

Product Warranty Coverage

You may find out your product warranty coverage at the link below before calling our Customer Service Hotline (65) 6457 3678 or visiting our Service Centre.

http://europace.com.sg/ewarranty/src/cupload/settings_pdf/1/1-1-2c899-1563960978-WARRANTY-COVERAGE-19_0221.pdf

TERMS & CONDITIONS OF WARRANTY (THIS WARRANTY IS VALID IN SINGAPORE ONLY)

Your appliance is warranted against faulty design, workmanship or materials for a period of 12 months unless otherwise stated from the date of purchase, subject to the following terms & conditions herein below:-

- 1) That the owner shall register the product warranty online at our website www.europace.com.sg within 7 (seven) days from the date of purchase.
- 2) That the appliance shall be used solely for domestic purposes and not for commercial purposes or any other purposes whatsoever and used strictly under the instruction for operation as provided by the manufacturers or the appliance.
- 3) That if any time during the warranty period any part or parts of this appliance is removed, tampered, modified, adjusted, altered, handled or repaired in any way whatsoever by any persons other than those authorized by Strategic Marketing (S) Pte Ltd, this warranty shall immediately cease to be valid and become void.
- 4) That the owner shall produce the E-warranty registration or tax invoice/receipt and such other documentary proof of purchase of the appliance to our satisfaction as we may deem necessary when requesting for repair and service.
- 5) That our decision on all queries relating to complaints as to defects either of workmanship or of materials shall be conclusive and the owner shall agree to abide by such a decision. Any appliance or defective part which has been replaced shall become our property.
- 6) The terms and conditions of this warranty shall be contained exclusively in this document and no other presentation of provision, either written or otherwise, regardless of the origin of the same, shall be accepted as either adding or removing from these terms and conditions.
- 7) That this warranty shall cease to be valid and void if the appliance is exported or relocated from Singapore.
- 8) That there shall be no removal, alteration, defacement, or made illegible/tampered or any kind of the serial number on the appliance.
- 9) That the owner shall be fully responsible for the due delivery and collection of the appliance for any work done according to this warranty. Transportation expenses incurred for delivery or handling the appliance are chargeable to the owner.
- 10) Transportation and labour charges apply after the full parts warranty expires. Refer to <https://www.europace.com.sg/ewarranty/> for more information.

In addition to the above, this warranty shall be subjected to the following limitations and exclusions:-

a) The appliance shall be warranted by STRATEGIC MARKETING (S) PTE. LTD. from date of purchase only for a period of:-

10 years - Heating Element warranty applies to selected models of Storage Water Heaters.

- Tank Leakage warranty applies to selected models of Storage Water Heaters.

8 years - Motor warranty applies only to selected models of Stand Fans (Walk-in warranty).

10 years - Compressor warranty applies to selected models of Refrigerators.

6 years - Motor warranty applies only to selected models of Stand Fans (Walk-in warranty).

- Compressor warranty applies only to selected models of System Air Conditioners and Portable Air Conditioners.

5 years - Compressor warranty applies to Refrigerators, Freezers, Wine Coolers, Portable Air Conditioners & Casement Air Conditioners (Outdoor warranty). Transportation is chargeable from the 2nd year to 5th year.

- Compressor warranty applies to Dehumidifiers (Walk-in warranty)

- Motor warranty applies only to selected models of Stand Fans (Walk-in warranty).

3 years - Full parts warranty applies only to selected models of Air Purifiers & selected models of Dehumidifiers (Walk-in warranty).

- Heating Element warranty applies only to selected models of Garment Steamers (Walk-in warranty).

- Motor warranty applies only to selected models of Jet Turbine Fans & selected models of Air Coolers (Walk-in warranty).

2 years - Motor and internal parts warranty applies only to selected models of Stand Fans, selected models of Oscillation Power Fans & selected models of Air Purifiers (Walk-in warranty).

- Heating Element warranty applies to selected models of Electric Ovens & selected models of Kettle Jugs. (Walk-in warranty)

- Motor warranty applies only to selected models of Jet Turbine Fans (Walk-in warranty).

- Full parts warranty applies only to Wine Coolers of 34 Bottles & above.

1 year - Full parts warranty applies to *Lifestyle Products (cash & carry items), Small Kitchen Appliances, Fans, Air Coolers, Wine Coolers of 20 Bottles & below, Mini Bar Fridge (Walk-in warranty)

- Full parts warranty apply to Refrigerators, Air Conditioners & Freezers (Outdoor warranty).

Check out the warranty coverage of your appliance at www.europace.com.sg

b) The owner waives all or any claims to compensation monetary or otherwise which he/she may be entitled to and shall agree to accept any compensation whatsoever by way of additional repairs or otherwise which we in our absolute discretion may deem fit to offer. The giving of compensation shall be subjected to the other provisions of the warranty.

c) This warranty shall not be transferable, negotiable or assignable to any third party.

d) The warranty does not include transport delivery or handling charges incurred in the transportation of the appliance to and from Strategic Marketing (S) Pte Ltd.

e) Damage caused during transit where the appliance is transported for servicing, repair, or in relation thereof or connection therewith.

f) In respect of refrigerator and air conditioner only, upon the expiry of 12 months from the date of purchase, this warranty will not cover transport, refrigerant and labour to install a new compressor.

g) This warranty will not cover chemical cleaning, maintenance service, general service and overhaul, which if confirm is chargeable.

h) Defects or fault in the appliance which has been used for commercial purposes or which have been rented/leased or which have been otherwise subject to other than household use.

i) Claims for damaged/missing parts after 3 days from the original date of goods received will not be valid.

j) This warranty and the Replacement Scheme does not particularly cover damages and/or defects arising from

- Usage of wrong electrical supply/voltage.
- Usage not according to the Instruction Manual provided by the manufacturers.
- Misuse, accidents, negligence, abuse, improper installation, or any manner of tampering.
- Normal wear and tear.
- Corrosions rusting or stains.
- Scratches, dents on the unit body, casing or paintwork of the appliance.
- Act of God, fire, flood and civil unrest.
- We shall not under any obligation, legal or otherwise to repair this appliance or one to one exchange if the same shall be required as a result of losses, damages, and malfunctions arising from any of the causes mentioned in the paragraph.

k) All accessories, external parts and extruded parts such as front panel, casing, door, glass cover, glass door, cable/cord assembly, batteries, adaptor, plug, remote control, control knob, buttons, filter, UV lamp, oven tray, wooden rack, exhaust hose, fixtures, panels, cover, lid and lever, plastic parts, fan blades, blade guard, inner pots, brushes, water tanks, attachments made of glass, plastic and/or porcelain, detachable parts, and other option items are excluded from this warranty.

All services provided after the warranty period will be chargeable at standard rates determined by STRATEGIC MARKETING (S) PTE. LTD.

The terms and conditions of this warranty shall be varied except with the written and express consent or agreement of Strategic Marketing (S) Pte. Ltd. While Strategic Marketing (S) Pte. Ltd. endeavours to repair any defects after the warranty period, it is subject to availability.

It is hereby expressly provided that any liability of Strategic Marketing (S) Pte. Ltd. for any loss or damage whatsoever arising from, relating to or in connection with the purchase of the appliance shall not exceed the purchase price (excluding installation costs) of the appliance. Similarly, Strategic Marketing (S) Pte. Ltd.'s liability for any breach of this warranty shall be limited to the purchase price (excluding installation costs) of the appliance.

* Lifestyle Products - Garment Steamer, Humidifier, Dehumidifier, Air Purifier, Mini Bar-Fridge.

* Walk-in warranty - Customers are obliged to bring the warranted products to Strategic Marketing (S) Pte. Ltd. Service Centre for repair/service during the warranty period.



**Scan QR Code for
the online Warranty
Registration**

Ver. 20 _0312

Celebrate Fine Living!

For more technical details / enquiries, please visit:

EUROPACE SERVICE CENTER

10 Changi South Street 3 #06-01 Singapore 486147

Tel: (65) 6457 3678 | Fax: (65) 6741 0728

Operating Hours: Monday-Friday: 9am - 5pm | Saturday: 9am - 12pm

Email: service@strategic.com.sg

www.europace.com.sg | www.strategic.com.sg

RELATED PRODUCTS & MAIN CONTACT HOTLINE

System Split Aircons | Tel: 6858 0801 | Email: systemac@strategic.com.sg (Twin City)

Portable & Casement Aircons | Tel: 6291 0800 | Email: portableac@strategic.com.sg (Jia Yue)

Refrigerators, Washing machines, Cookers & other major appliances |

Tel: 6289 0802 | Email: mda@strategic.com.sg (TnG)

This product is distributed by Strategic Marketing (S) Pte Ltd.

If there is any technical amendment for the product, it will be edited on the updated version of the instruction manual without prior notice. The pictures shown in the instruction manual is only for illustration purpose only. If the appearance or colour of the product is modified, please refer to the actual product as a standard.