



# MULTI-FUNCTION HOTPOT | ESB 7310W

## Instruction Manual | 使用说明书

Thank you for purchasing EuropAce Multi-Function Hotpot.  
For safety purpose, please read this operating instruction manual carefully before using  
and keep it for future reference.



RELISHING YOUR COOKERY

*Celebrate Fine Living!*



Product Features .....	1
产品特点	
Technical Parameters .....	1
产品的技术参数	
Product Part Lists .....	1
产品结构图	
Circuit Diagram .....	2
电路图	
Operating Instructions .....	2
使用方法	
Safety Instructions .....	3
注意事项	
Safety and Precaution .....	5
产品安全及注意事项	
Care and Maintenance .....	6
保养方式	
Hazardous Substances List .....	7
有害物质表	

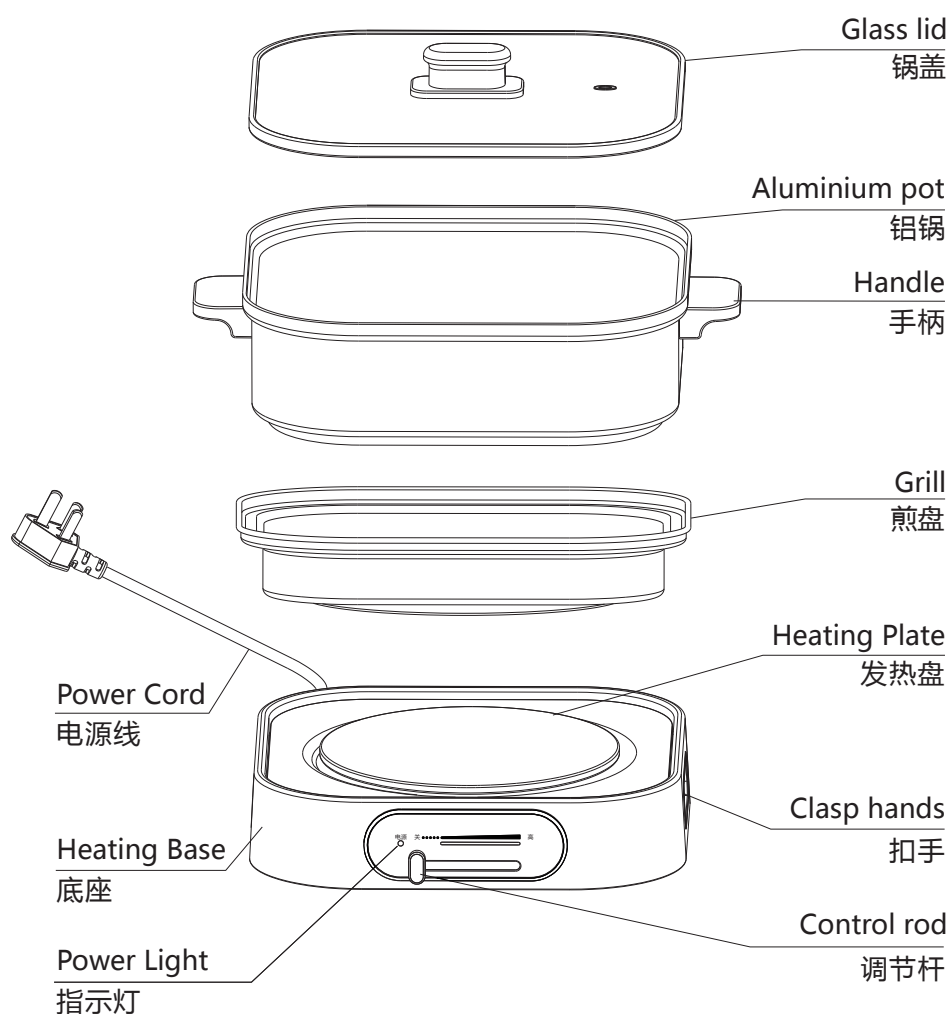
## Product Features 产品特点

1. Combined with Eastern and Western cuisine culture in design.  
在设计 and 造型方面，融合中西饮食文化的精华。
2. One switch temperature control for easy use.  
通过调节杆滑动，易于使用。
3. Removable construction for easy cleaning.  
分体式结构，方便清洗。

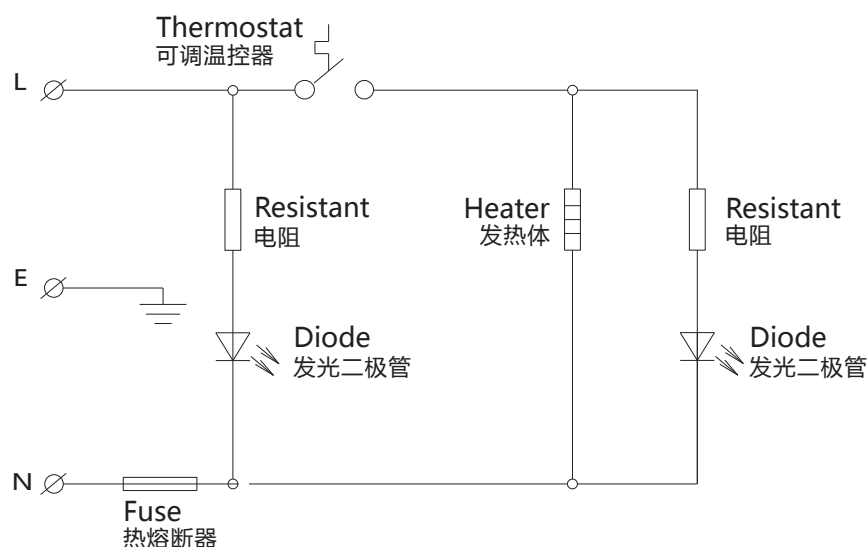
## Technical Parameters 产品的技术参数

Model No. 型号	Rated Voltage 额定电压	Rated Power 额定功率	Capacity 额定容量
ESB 7310W	220-240V ~ 50Hz	1000W	3.0L

## Product Part Lists 产品结构图



## Circuit Diagram 电路图



## Operating Instructions 使用方法

### ● For Cooking Pot 铝锅使用方法

1. Before each operation, check if there are any articles on the surface of the heating plate; remove it if there is any. Ensure the surface of the heating plate clean and dry.  
使用前，请检查底座的发热盘表面，如有异物应予以清除。
2. To avoid the poor contact, first dry the water stain on the bottom of the pan filled with soup or water, then put it on the hot plate.  
装有汤料（清水）的铝锅，先把锅底部的水渍擦干，再放于发热盘上，避免发热盘与锅之间有异物，从而导致接触不良，加热不均匀。
3. Switch the knob to the “OFF” position and insert the plug into the socket.  
将调节杆滑至“关”的位置，然后将电源线一端插入底座品字插内，另一端插头插入电源插座，电源指示灯亮。
4. Switch the knob to the “HIGH” position (the highest working temperature) and the indicating light turns on, indicating working.  
将调节杆滑至“高”的位置（最高工作温度位置），此时加热指示灯亮，表示正在加热。  
N.B. During the heating process, you can move the lever towards the OFF position and the power can be minimized from high to low.  
(注：在使用过程中，若觉得温度过高，可将调节杆滑向关的方向，即可实现断续加热，达到所需的温度。)
5. And food to the cooking pot when the water or soup start to boil.  
当水沸腾后，就可以开始煮食物。
6. After using, move the lever to the OFF position and take off the plug from the socket.  
使用完毕，将调节杆滑至“关”的位置，然后将电源线插头拔下。

## ● For Grill 煎盘使用方法

1. Place the grill onto the heating and slightly adjust it to fit with the heating plate.  
将煎盘放于热源座上，确保煎盘与发热盘表面接合。
2. To avoid the poor contact, first dry the water stain on the bottom of the pan filled with soup or water, then put it on the hot plate.  
将调节杆滑至“关”的位置，然后将电源线一端插入底座品字插内，另一端插头插入电源插座，电源指示灯亮。
3. Switch the knob to the “OFF” position and insert the plug into the socket.  
将调节杆滑至“高”的位置（最高工作温度位置），此时加热指示灯亮，表示正在加热。
4. Add food into the grill when the grill is hot.  
待煎盘热后，再加入煎烤的食物。  
N.B. During the grill process, please pay attention the color change of the food and turn the food regularly to prevent burn or rare food.  
(注：煎烤过程，请注意食物的变化并且需要翻动食物，以免烤焦或烤不熟等现象)
5. After using, move the lever to the OFF position and take off the plug from the socket.  
使用完毕，将调节杆滑至“关”的位置，然后将电源线插头拔下。

## Safety Instructions 注意事项

1. Before connecting to power, please ensure the local voltage fit to the appliance and the socket must be grounded and installed as required.  
在接通电源之前，请确认当地电压与产品工作电压相符，电源插座必须接地极，并按要求安装。
2. Operate the appliance on a flat, ventilated, dry and heat-proof place.  
使用时应将产品放置于水平、通风、干燥的地方。
3. Before use, please do make sure the heating plate and the bottom of the cooking pot/ grill are clean and ensure the cooking pot or grill well connect with the heating plate.  
使用前必须清除发热盘表面和铝锅底部的杂物，使发热盘与铝锅良好接触。
4. Before turn on the appliance, add water to the cooking pot first. Never turn on the appliance with an empty pot for dry burning as this may result in serious damage to the appliance.  
产品工作时，铝锅内先加水，后通电，请勿通电干烧，否则容易烧坏产品。
5. During use, the temperature is very high on the surface of the product and vapor is exhausted from the vented hole. Please do not approach or touch the surface in case of getting burnt.  
使用过程中，产品表面温度较高，排气孔有蒸汽排出，请勿靠近或触摸，以免烫伤。
6. The cooking pot/grill and heating base remains hot after use when the hotpot or grill removed. Please do not approach or touch the heating base to avoid getting burnt.  
使用完毕，铝锅/煎盘，发热盘温度仍较高，请勿靠近或触摸，以免烫伤。

7. To prevent leakage or short circuit, do not put the heating base into water or exposed in dampness.  
请勿将底座浸入水中，否则会导致电器部分受潮，直接影响到电器部分的绝缘性能，从而造成漏电或短路，容易发生触电危险。
8. Never heat the hotpot or the grill on other heating sources.  
请勿将铝锅/煎盘置放于其他炉具上加热。
9. During first use, some slight smoke and smell may be emitted from the appliance, which is a normal phenomenon as it is from the protecting oil on the heating plate. This will disappear after a few times of use and will not do harm to human health. Please open your windows for better air ventilation and quicker dispersal.  
第一次使用时，如闻到异味、青烟，不必担心，这属于正常现象，是产品的保护油散发出来的气味，使用后会消除，不会对人体造成伤害，可开窗通风，快速驱散异味。
10. If the supply cord is damaged, it must be replaced by the manufacturer, its service agent or similarly qualified persons in order to avoid a hazard.  
如果电源软线损坏，为避免危险，必须由厂家或厂家授权的专业人员来更换。
11. This appliance is not intended for use by persons (including children) with reduced physical, sensory or mental capabilities, or lack of experience and knowledge, unless they have been given supervision or instruction concerning the use of the appliance by a person responsible for their safety.  
本器具不预备给体能弱、反应迟缓或有精神障碍的人（包括儿童）使用，除非在对其负有安全责任的人员指导或帮助下安全使用。
12. Close supervision is necessary when the appliance is used by or near children.  
Never leave the appliance unattended in case children shall play with the appliance.  
Children should be supervised to ensure that they do not play with the appliance.  
儿童应该被监督，以保证他们不玩耍器具，以免发生意外。
13. Appliances are not intended to be operated by means of an external timer or separate remote-control system.  
本产品不能在外接定时器或独立的遥控控制系统的方式下运行。

- Ensure proper operation of the appliance, do not cover the vented hole with mop or other articles.

请勿用抹布或其它物品覆盖蒸汽口，以免影响机器运作。



- Get the power cord replaced by the manufacturer or its service facility or similar professionals when it malfunctions.

如果电源软线损坏，必须用专用软线或从其制造厂或维修部买到的专用组件来更换。



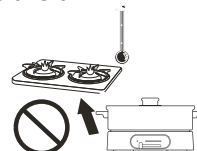
- Please do not directly wash the appliance in case of malfunction or electric shock.

请不要用水直接冲洗淋湿机体，以免机件损坏或漏电。



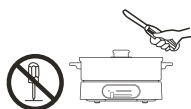
- Never leave the appliance near the gas cooker or other heating sources to avoid being affected by high temperature.

远离高温发热器具或灶头，避免环境温度过高，影响机器运作。



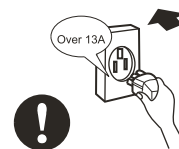
- Do not self-disassemble, self-repair or self-alter the appliance for the sake of safety.

请勿自行拆卸、修理或改装此产品，以免日后使用时发生危险。



- Do not use the socket that's not complied with the rated voltage.

请不要使用额定电压以外的电源插座。



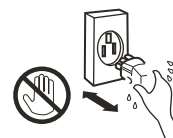
- Do not approach or touch the vented hole of the glass lid in case of getting burnt.

此产品运作时，请勿靠近接触蒸汽口，以免烫伤。



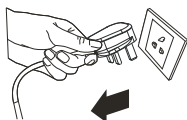
- Do not connect the power plug to the socket with wet hand in case of electric shock.

请勿于湿手时接触电源插座或电源线以免发生危险。



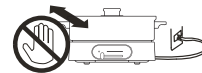
- Please unplug when the appliance is not in use for a certain period.

如长时间不使用本产品，请拨下电源插头。



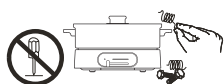
- Do not move the appliance when it's working. Turn off power and unplug from the socket if you have to move the appliance.

请勿于运作中移动此产品，必须先关机及拨出电源线，以免危险。



- Please do not attempt to reach inside the appliance with metal objects as it may lead to electric shock or malfunction.

请勿将任何异物插/放入机体内，以免机件故障。



- Children are not allowed to operate on the appliance. And never leaver the appliance in the place where children could reach.

请勿让儿童操作此产品，并放置于婴儿不能触及的地方。



1. Cook with 10% of white vinegar to disinfect the cooking pot by boiling for 10 minutes in initial use.  
铝锅初次加热可倒入十比一左右的白醋煮沸10分钟，进行消毒。
2. The aluminum cooking pot may fur up after a few times' use which is a normal phenomenon that generated by a calcium and magnesium ions in water. It can be removed by boiling with white vinegar and tea.  
铝锅水垢为正常现象，是由于水中钙镁离子于发热盘反应生成。使用白醋，茶叶（绿茶）煮沸，可以有效清除水垢。
3. Pay attention to proper operation when using to prevent the soup from overflowing.  
使用时注意正确操作，防止汤汁外溢。
4. Please pour enough water into the cooking pot before use and timely add with additional amount of water when water's reduced to avoid dry-burning.  
使用时应在铝锅内必须放入适量水，水量过少时应及时添加，防止干烧。
5. If soup needs removed from the pot, please first turn off power and allow the pot to cool down to avoid burns as the heating plate remains hot.  
当需要清除锅中汤水时，应先断电冷却后再倒出，此时发热盘温度较高，以免烫伤。
6. No separation between the aluminum pot and heating plate when in use. DO NOT put the aluminum pot on fire heating directly.  
产品使用时铝锅和发热盘间不能有任何物品隔开。请勿将铝锅放在明火上加热。
7. Wash with a mild detergent and dry with a dry cloth after each use. DO NOT use the corrosive cleaning detergent for cleaning.  
用中性清洗剂清洗，每次使用后应清洗并用干布擦干水份。需要特别注意的是，不可用腐蚀性强的清洗剂清洗产品。
8. The plug should be wiped frequently to keep the product clean. Or the dust will gradually accumulate at the two poles of the plug to increase the contact resistance of the socket and the plug, resulting in poor contact and heat.  
插头应经常擦拭，保持产品清洁，否则会在插头两极逐渐积灰尘产生铜绿增加插座与插头的接触电阻，导致接触不良、发热等问题。
9. Pay attention to the shape of the bottom of the pot to prevent collision deformation, affecting thermal efficiency and service life, if the bottom of the pot is deformed, stop using it and replace the aluminum pan.  
注意保持锅底的形状，防止碰撞变形，影响热效率和使用寿命，如果锅体底部变形，应停止使用并更换铝锅。
10. Clean the grill after it cools down with soft cotton or sponge damped in mild detergent. Never scrub the grill with abrasive cloth or metallic ball. Please soak the grill for about 10 minutes before cleaning if the stains are hard to clean.



煎盘使用后，等煎盘自然冷却，用柔软的棉纱团或海绵加上中性的清洗剂来清洗，切勿以粗糙的砂布或金属球大力洗擦。如果遇到难洗的顽固污渍，用清水浸泡十分钟左右再用柔软的棉纱团或海绵进行清洗。


## Hazardous Substances List

## 有害物质表

部件名称	有害物质					
	铅(Pb)	汞(Hg)	镉(Cd)	六价铬 (Cr(VI))	多溴联苯 (PBB)	多溴二苯醚 (PBDE)
温控器	○	○	○	○	○	○

○ :表示该有害物质在该部件所有均质材料中的含量均在GB/T 26572规定的限量要求以下；

× :表示该有害物质至少在该部件的某一均质材料中的含量超出了GB/T 26572规定的限量要求；



环保使用期限标志：代表该产品含有某些有害物质，在环保期限内(10年)可以放心使用，超过环保期限后，应进入回收循环系统。

## **Product Warranty**

The Warranty Card is not provided in the product packaging. You can register the product warranty online at our website <https://www.europace.com.sg/ewarranty/> within 7 (seven) days from the date of purchase. You will enjoy an additional 3 months of the product standard warranty when you register online. Please produce your E-warranty registration when requesting for repair and service at our Service Centres nearest to you.

In the event, if you are unable to register the product warranty online you must produce your purchase receipt/tax invoice and such other documentary proof of purchase of the appliance when requesting for repair and service.

### **Product Warranty Coverage**

You may find out your product warranty coverage at the link below before calling our Customer Service Hotline (65) 6457 3678 or visiting our Service Centre.

[http://europace.com.sg/ewarranty/src/cupload/settings\\_pdf/1/1-1-2c899-1563960978-WARRANTY-COVERAGE-19\\_0221.pdf](http://europace.com.sg/ewarranty/src/cupload/settings_pdf/1/1-1-2c899-1563960978-WARRANTY-COVERAGE-19_0221.pdf)

### **TERMS & CONDITIONS OF WARRANTY (THIS WARRANTY IS VALID IN SINGAPORE ONLY)**

Your appliance is warranted against faulty design, workmanship or materials for a period of 12 months unless otherwise stated from the date of purchase, subject to the following terms & conditions herein below:-

- 1) That the owner shall register the product warranty online at our website [www.europace.com.sg](http://www.europace.com.sg) within 7 (seven) days from the date of purchase.
- 2) That the appliance shall be used solely for domestic purposes and not for commercial purposes or any other purposes whatsoever and used strictly under the instruction for operation as provided by the manufacturers or the appliance.
- 3) That if any time during the warranty period any part or parts of this appliance is removed, tampered, modified, adjusted, altered, handled or repaired in any way whatsoever by any persons other than those authorized by Strategic Marketing (S) Pte Ltd, this warranty shall immediately cease to be valid and become void.
- 4) That the owner shall produce the E-warranty registration or tax invoice/receipt and such other documentary proof of purchase of the appliance to our satisfaction as we may deem necessary when requesting for repair and service.
- 5) That our decision on all queries relating to complaints as to defects either of workmanship or of materials shall be conclusive and the owner shall agree to abide by such a decision. Any appliance or defective part which has been replaced shall become our property.
- 6) The terms and conditions of this warranty shall be contained exclusively in this document and no other presentation of provision, either written or otherwise, regardless of the origin of the same, shall be accepted as either adding or removing from these terms and conditions.
- 7) That this warranty shall cease to be valid and void if the appliance is exported or relocated from Singapore.
- 8) That there shall be no removal, alteration, defacement, or made illegible/tampered or any kind of the serial number on the appliance.
- 9) That the owner shall be fully responsible for the due delivery and collection of the appliance for any work done according to this warranty. Transportation expenses incurred for delivery or handling the appliance are chargeable to the owner.
- 10) Transportation and labour charges apply after the full parts warranty expires. Refer to <https://www.europace.com.sg/ewarranty/> for more information.

In addition to the above, this warranty shall be subjected to the following limitations and exclusions:-

a) The appliance shall be warranted by STRATEGIC MARKETING (S) PTE. LTD. from date of purchase only for a period of:-

10 years - Heating Element warranty applies to selected models of Storage Water Heaters.

- Tank Leakage warranty applies to selected models of Storage Water Heaters.

8 years - Motor warranty applies only to selected models of Stand Fans (Walk-in warranty).

10 years - Compressor warranty applies to selected models of Refrigerators.

6 years - Motor warranty applies only to selected models of Stand Fans (Walk-in warranty).

- Compressor warranty applies only to selected models of System Air Conditioners and Portable Air Conditioners.

5 years - Compressor warranty applies to Refrigerators, Freezers, Wine Coolers, Portable Air Conditioners & Casement Air Conditioners (Outdoor warranty). Transportation is chargeable from the 2nd year to 5th year.

- Compressor warranty applies to Dehumidifiers (Walk-in warranty)

- Motor warranty applies only to selected models of Stand Fans (Walk-in warranty).

3 years - Full parts warranty applies only to selected models of Air Purifiers & selected models of Dehumidifiers (Walk-in warranty).

- Heating Element warranty applies only to selected models of Garment Steamers (Walk-in warranty).

- Motor warranty applies only to selected models of Jet Turbine Fans & selected models of Air Coolers (Walk-in warranty).

2 years - Motor and internal parts warranty applies only to selected models of Stand Fans, selected models of Oscillation Power Fans & selected models of Air Purifiers (Walk-in warranty).

- Heating Element warranty applies to selected models of Electric Ovens & selected models of Kettle Jugs. (Walk-in warranty)

- Motor warranty applies only to selected models of Jet Turbine Fans (Walk-in warranty).

- Full parts warranty applies only to Wine Coolers of 34 Bottles & above.

1 year - Full parts warranty applies to \*Lifestyle Products (cash & carry items), Small Kitchen Appliances, Fans, Air Coolers, Wine Coolers of 20 Bottles & below, Mini Bar Fridge (Walk-in warranty)

- Full parts warranty apply to Refrigerators, Air Conditioners & Freezers (Outdoor warranty).

Check out the warranty coverage of your appliance at [www.europace.com.sg](http://www.europace.com.sg)

b) The owner waives all or any claims to compensation monetary or otherwise which he/she may be entitled to and shall agree to accept any compensation whatsoever by way of additional repairs or otherwise which we in our absolute discretion may deem fit to offer. The giving of compensation shall be subjected to the other provisions of the warranty.

c) This warranty shall not be transferable, negotiable or assignable to any third party.

d) The warranty does not include transport delivery or handling charges incurred in the transportation of the appliance to and from Strategic Marketing (S) Pte Ltd.

e) Damage caused during transit where the appliance is transported for servicing, repair, or in relation thereof or connection therewith.

f) In respect of refrigerator and air conditioner only, upon the expiry of 12 months from the date of purchase, this warranty will not cover transport, refrigerant and labour to install a new compressor.

g) This warranty will not cover chemical cleaning, maintenance service, general service and overhaul, which if confirm is chargeable.

h) Defects or fault in the appliance which has been used for commercial purposes or which have been rented/leased or which have been otherwise subject to other than household use.

i) Claims for damaged/missing parts after 3 days from the original date of goods received will not be valid.

j) This warranty and the Replacement Scheme does not particularly cover damages and/or defects arising from

- Usage of wrong electrical supply/voltage.
- Usage not according to the Instruction Manual provided by the manufacturers.
- Misuse, accidents, negligence, abuse, improper installation, or any manner of tampering.
- Normal wear and tear.
- Corrosions rusting or stains.
- Scratches, dents on the unit body, casing or paintwork of the appliance.
- Act of God, fire, flood and civil unrest.
- We shall not under any obligation, legal or otherwise to repair this appliance or one to one exchange if the same shall be required as a result of losses, damages, and malfunctions arising from any of the causes mentioned in the paragraph.

k) All accessories, external parts and extruded parts such as front panel, casing, door, glass cover, glass door, cable/cord assembly, batteries, adaptor, plug, remote control, control knob, buttons, filter, UV lamp, oven tray, wooden rack, exhaust hose, fixtures, panels, cover, lid and lever, plastic parts, fan blades, blade guard, inner pots, brushes, water tanks, attachments made of glass, plastic and/or porcelain, detachable parts, and other option items are excluded from this warranty.

All services provided after the warranty period will be chargeable at standard rates determined by STRATEGIC MARKETING (S) PTE. LTD.

The terms and conditions of this warranty shall be varied except with the written and express consent or agreement of Strategic Marketing (S) Pte. Ltd. While Strategic Marketing (S) Pte. Ltd. endeavours to repair any defects after the warranty period, it is subject to availability.

It is hereby expressly provided that any liability of Strategic Marketing (S) Pte. Ltd. for any loss or damage whatsoever arising from, relating to or in connection with the purchase of the appliance shall not exceed the purchase price (excluding installation costs) of the appliance. Similarly, Strategic Marketing (S) Pte. Ltd.'s liability for any breach of this warranty shall be limited to the purchase price (excluding installation costs) of the appliance.

\* Lifestyle Products - Garment Steamer, Humidifier, Dehumidifier, Air Purifier, Mini Bar-Fridge.

\* Walk-in warranty - Customers are obliged to bring the warranted products to Strategic Marketing (S) Pte. Ltd. Service Centre for repair/service during the warranty period.



**Scan QR Code for  
the online Warranty  
Registration**

Ver. 20 \_0312

For more technical details / enquiries, please visit:

## **EUROPACE SERVICE CENTER**

**10 Changi South Street 3 #06-01 Singapore 486147**

Tel: (65) 6457 3678 | Fax: (65) 6741 0728

Operating Hours: Monday-Friday: 9am - 5pm | Saturday: 9am - 12pm

Email: [service@strategic.com.sg](mailto:service@strategic.com.sg)

[www.europace.com.sg](http://www.europace.com.sg) | [www.strategic.com.sg](http://www.strategic.com.sg)

### **RELATED PRODUCTS & MAIN CONTACT HOTLINE**

System Split Aircons | Tel: 6858 0801 | Email: [systemac@strategic.com.sg](mailto:systemac@strategic.com.sg) (Twin City)  
Portable & Casement Aircons | Tel: 6291 0800 | Email: [portableac@strategic.com.sg](mailto:portableac@strategic.com.sg) (Jia Yue)  
Refrigerators, Washing machines, Cookers & other major appliances |  
Tel: 6289 0802 | Email: [mda@strategic.com.sg](mailto:mda@strategic.com.sg) (TnG)

*Celebrate Fine Living!*

This product is distributed by Strategic Marketing (S) Pte Ltd

If there is any technical amendment for the product, it will be edited on the updated version of the instruction manual without prior notice. The pictures shown in the instruction manual is only for illustration purpose only. If the appearance or colour of the product is modified, please refer to the actual appliance as a standard.